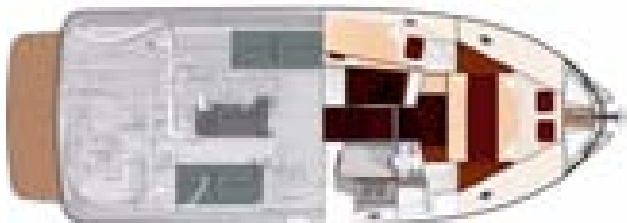
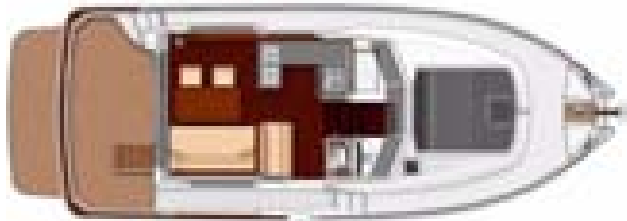
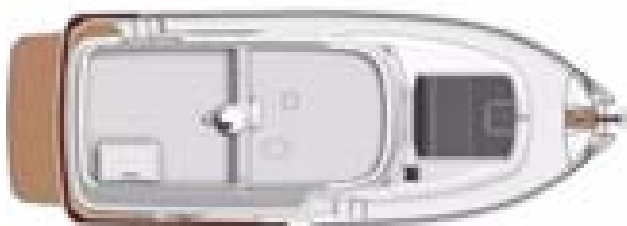




Series Ten



## GENERAL SPECIFICATIONS

• L.O.A*:	10,98 m	36'0"
• Hull length:	9,98 m	32'9"
• Overall width:	4,00 m	13'1"
• Beam:	3,98 m	13'1"
• Light displacement (EC):	7 450 kg	16,420 lbs
• Air draft**:	3,32 m	10'11"
• Air draft***:	4,41 m	14'6"
• Draft:	1,00 m	3'3"
• Fuel tank:	800 L	211 US Gal
• Water tank:	320 L	85 US Gal
• Maximum engine power:	1 x 425 HP	1 x 425 HP
• Max engine certification:	425 HP	425 HP

\* (with aft swim platform)

\*\* (with mast folded)

\*\*\* (with mast in position)

## ARCHITECT / DESIGNERS

- Naval Architect: BENETEAU POWER
- Interior design: M. JOUBERT & B. NIVELT

## CE CERTIFICATION

- Category B - 8 people
- Category C - 10 people
- Category D - 11 people

## STANDARD EQUIPMENT

### CONSTRUCTION

#### HULL

Composition:

- Sandwich (polyester resin - fiberglass / balsa core)
- White gel coat
- Structural hull counter molding in monolithic laminate (polyester resin - fiberglass)

Profile:

- Semi-planning hull
- Stainless steel guard sheer rail on hull

#### DECK

Composition:

- Sandwich (polyester resin - fiberglass / balsa core)
- Structural counter molding in monolithic laminate (polyester resin - fiberglass)
- White gel coat
- Diamond tip type non-slip surface

### DECK EQUIPMENT

Gangway door to starboard

#### MOORING - ANCHORING

- Stainless steel bow fitting - Stainless steel bow roller and swing
- 6 Mooring cleats (L 300mm / 12")
- Stainless steel gunwale guards
- 1 Mooring locker with self-bailer - Hood cover

#### SAFETY ON DECK

- Handrails in cockpit
- Stainless steel open pulpit

#### COCKPIT

- Self-bailing cockpit
- 1 Locker in cockpit bottom gas piston assisted and lockable
- Gas cylinder locker
- Hot/cold cockpit shower
- Cockpit gate in transom
- Stainless steel and polyester trim swim platform with natural solid wood
- 1 Stainless steel swimming ladder, in position
- 1 Access door to sidedeck from cockpit with grey-tinted porthole
- 4 Tallon marine receivers®

#### FLY BRIDGE

- Flybridge self-bailing
- Stainless steel access ladder to flybridge with plain solid wood steps and handrails stainless steel
- Polyester trap door with gas piston
- Stainless steel handrail (port and starboard)
- Samson post stainless steel: Navigation light mounting, Radar, Projector
- Aerial VHF
- Fog horn

### INTERIOR

- Woodwork Alpi Mahogany
- Parquet type laminated floors
- Taupe Cushions

#### SALON

Headroom: 1,96 m / 6'5"

- Sofa convertible into double berth (1,20 x 2,00 m / 3'11" x 6'7")
- Height adjustable fold down saloon table in varnished wood
- 2 Director armchairs
- Grey tinted glass opening side windows in black painted aluminium frame
- Storage cupboards
- Cubby hole lockers
- 3 Leaf aft sliding door with black lacquered aluminium frame
- Pillar in stainless steel
- CD player / MP3, USB, IPOD®. Remote control
- 2 Speakers in wheelhouse and 2 Speakers in cockpit

#### GALLEY

Headroom: 1,96 m / 6'5"

U-shaped galley - Includes:

- Work top
- 2 Stainless steel sinks with cold/hot water mixer taps under pressure
- 2 Hob cooker and gas oven
- 130 L front opening fridge (Supply 220 V / 12 V)
- Cutlery drawer
- Storage
- Garbage bin

## STEERING STATION

- Two-seater pilot and copilot bench
- Two-seater pilot and copilot bench - PVC Arredo Upholstery
- Removable floor step
- Storage under pilot bench
- Sliding side door with direct access to catwalk, to starboard
- Clear glass windscreen with aluminium frames, black lacquered
- 3 Electric windscreen wipers
- Windscreen washer
- Demister
- Door to access sidedeck
- Grey tinted fixed windows with curtains, in black painted aluminium frame
- Instrument panel with wide space for fitting navigation electronics
- Engine dials: Revolution counter, Fuel gauge, Warnings, Rudder angle indicator, Flap indicators
- Electric windlass control\*
- Control "Bow and stern thrusters"
- navigation lights
- Fog horn
- Engine control
- Steering wheel
- Steering compass
- 12 V Power outlet

\* according to options

## HEAD VERSION (STARBOARD)

Headroom: 1,85 m / 6'1"

- Washroom completely counter molded
- Mirror
- Upper cupboard, Lower cupboard
- Electric pump for shower draining
- 1 Opening hatch with sunshades
- 1 Opening porthole with curtain
- Quiet flush electric toilet
- Sink
- Mixer tap
- Rigid holding tank 88L / 23 US Gal
- Chrome toilet paper holder
- Glass holder with glass
- Shower curtain

## OWNER CABIN (FORWARD)

Headroom: 1,95 m / 6'5"

- Double berth (1,99 x 1,60 m / 6'6" x 5'3")
- Marine mattress
- Mirror
- 2 Closets, one with shelves
- Large storage space under berths
- 1 Opening hatch with sunshades
- 2 Opening hull portholes with blackout curtains

## GUEST CABINS (PORTSIDE)

Headroom: 1,85 m / 6'1"

- Bunk beds (0,72 x 1,85 m / 2'4" x 6'1")
- Marine mattress
- Lower cupboard
- Storage under berth
- 1 Deck house sunroof with fitted mosquito net
- 2 Opening hull portholes with blackout curtains

## ENGINE

- Shaft line propulsion
- 5 Blade propeller
- Single engine Cummins® QSB5.9I - 425 HP / HP (313 Kw)
- Fuel filter with decanter
- Sea water filter
- Engine room soundproofed with high density foam 40 mm / 1-½" thick
- Air intakes for engine hold cooling, on deck
- Extinguisher
- Stainless steel fuel tank deck fill
- Aluminium fuel tanks (Capacity = 800 L / 211 US Gal)
- Steering system: Foam core, in stainless steel
- Hydraulic steering
- Electric trim tabs
- Bow thruster Quick BTQ 185 65 12

## ELECTRICITY

- Electrical panel 12 V / 220 V
- 220 V Shore power supply
- 2 engine batteries 12 V 50 Ah
- 1 Service battery 12 V 140
- Battery charger
- 2 Standard equipment: power outlet 12V
- Interior lighting (Overhead lights, reading lights)
- Outside lighting (navigation lights, Mooring light, Spot cockpit)

## PLUMBING

- 1 Manual bilge pump (Cockpit)
- 1 Electric bilge pump automatic
- Water pump for pressurizing hot/cold water system
- 25 L / 7 US Gal Water heater working off engine exchanger and 220 V
- Stainless steel water tank fill
- 1 Rotomolded water tank 320 L / 85 US Gal
- 1 Reservoir grey waters 320 L / 85 US Gal (optional extra)

## TRIM LEVEL

	AVANTAGE	ELEGANCE
1 000 W Electric windlass	■	■
Pack Loisirs Tallon Marine® (Kit of 4 multifunction adapters - 2 Universal supports for glasses - 2 Clips for keyrings, lines, bags?)	■	■
Deck searchlight	■	■
Pump for deck washing	■	■
Shore freshwater supply with pressure regulator	■	■
PVC Woven forward sun mattress Beige	■	■
Flat screen TV 22" LIGHTING + DVD/MP3 player in the salon	■	■
1 Multifunction screen (on port and starboard) e97 - Chart plotter - Colour depth sounder - GPS in wheelhouse		■
Auto pilot p70R		■

## OPTIONS

### PACKS

#### PACK ELECTRONIC

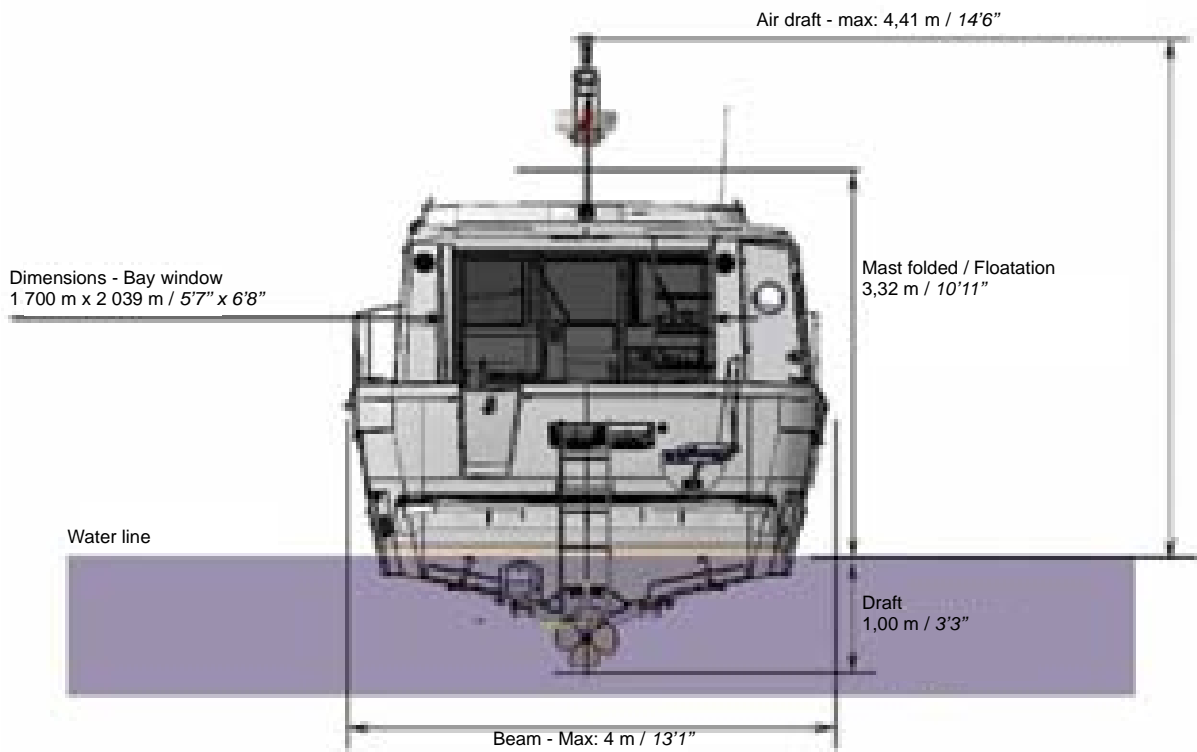
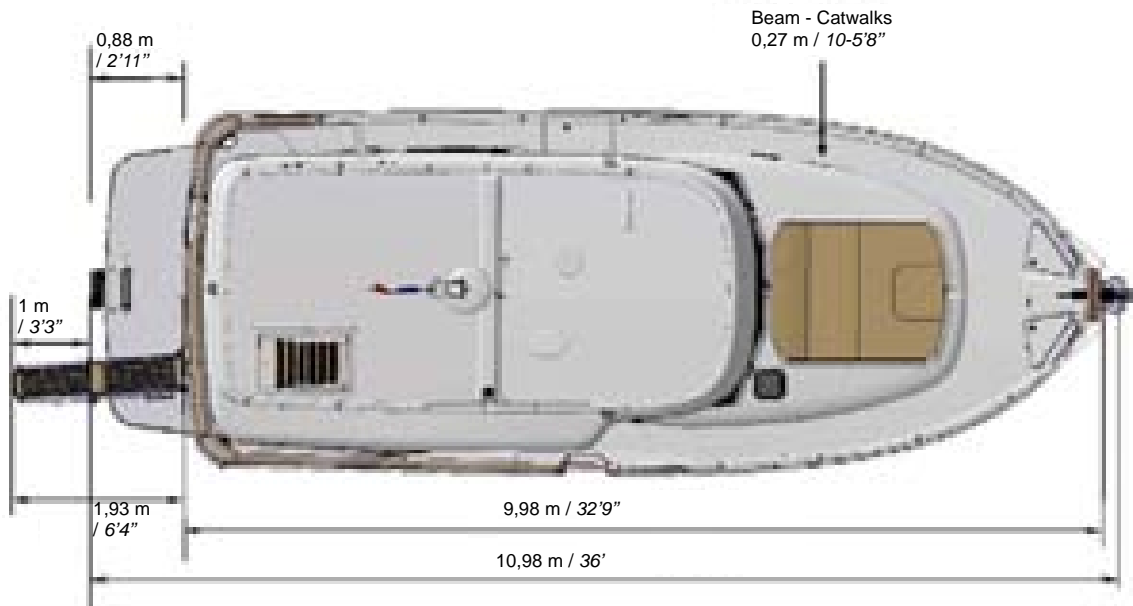
- Digital radar 4 Kw 48 NM
- RAYMARINE® VHF connected to the AIS 650 transponder system

### OTHER OPTIONS

- Complete mooring/anchoring kit (Anchor 16 kg / 35 lbs - 4 Mooring ropes - 6 Fenders)
- Hydraulic gangway
- Rear closure cockpit Dune or Silver (Choice between)
- Starboard cockpit and catwalk decked in solid plain wood
- Outside wheelhouse curtains Sunworker - blanks
- Stern thruster Quick BTQ 185 65 12
- 6KVA Electric generator - 220V / 50 Hz - with cocoon
- 220 V Air conditioning or 110 V (16 000 BTU in wheelhouse + 6 000 BTU for each cabin)
- Forced air heating fuel
- Oven Grill / Microwave (replacing the gas oven)
- 220 V Dishwasher - 5 people
- Ice maker - 220V / 50 Hz
- Steel Blue hull
- Pearl Grey hull
- 'Corail' carpet in the wheelhouse
- Carpet Corail (2 cabins + Passageway)
- Flat screen TV LIGHTING 22" + DVD and MP3 player in master cabin
- Screen e127 the wheelhouse in lieu of e97
- Salon upholstery "Fabrics"
- Salon upholstery "PVC"
- Salon upholstery "Ultraleather Promessa"
- Salon upholstery "Leather"
- L-shaped cockpit bench seat + Cushions
- Screens, Side door + Aft window door
- Separation curtain: Salon / galley
- PVC Woven Beige, PVC Diamante Storm, PVC Bi-ton Diamante Storm/Snow outside upholstery
- 6 People table setting
- Thermal imaging camera
- Pre-wiring for satellite TV reception
- Multifunction e127 screen in wheelhouse (replacing the e97)



America/Export: Please note that electric power and appliances may be different and/ or not offered on standard or on option. They would be adapted locally by your dealer.





Some rough indicative surfaces:

Salon + galley + wheelhouse: 7,5 m<sup>2</sup> / 80 sq ft  
 Owner cabin: 5 m<sup>2</sup> / 54 sq ft  
 Cockpit: 4,8 m<sup>2</sup> / 52 sq ft

